



Latham Close | | Plymouth | PL6 5PT

Offers over £230,000



COPP ESTATES

WHERE YOUR NEXT CHAPTER
BEGINS

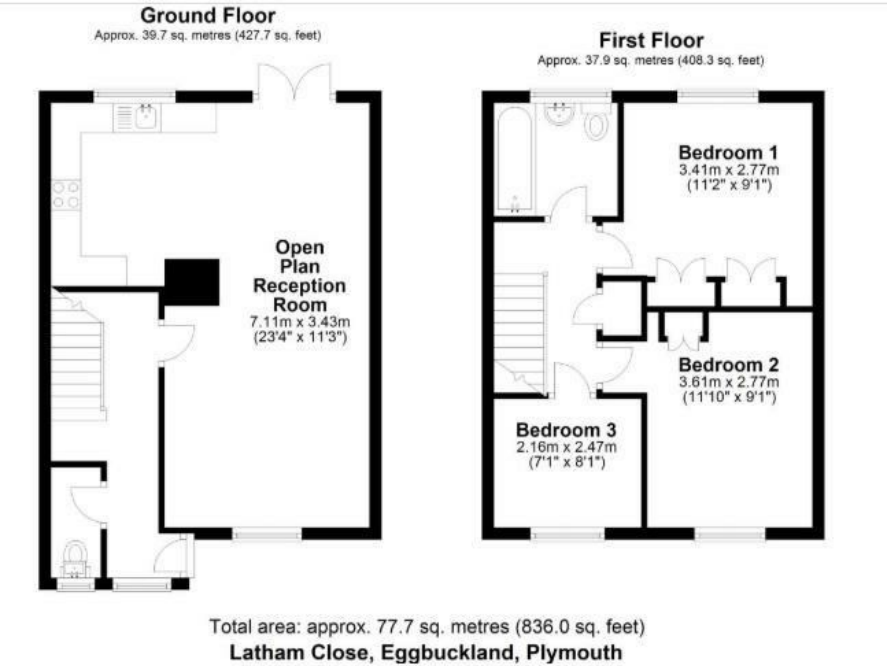
Latham Close |
Plymouth | PL6 5PT
Offers over £230,000

Beautifully presented and recently renovated, this attractive three-bedroom family home occupies a desirable southerly facing corner plot and offers stylish open-plan living, generous wrap-around gardens and a garage.

Located in the popular suburb of Eggbuckland, the property is ideally positioned for access to the A38 Devon Expressway, Derriford Hospital, Crownhill Village and Plymouth city centre. The area is well served by local schools including Widey Court Primary School, Austin Farm Academy and Eggbuckland Community College.

The accommodation is entered via a uPVC double-glazed front door into a welcoming hallway with wood-effect flooring, stairs to the first floor and useful under-stairs storage. A cloakroom is located off the hallway and is fitted with a low-level WC, hand wash basin, heated towel rail and front-facing window.

- Wrap Around Garden
- Open Plan Down Stairs
- Garage
- Partially Decked Garden & Astro Turf
- Close To Local Schools & Amenities
- Modern Throughout
- Down Stairs WC
- Easy access to A38
- South Facing End of Terrace
- Cul-De-Sac Location



Energy Efficiency Rating		
	Current	Potential
Very energy efficient - lower running costs		
(92 plus) A		
(81-91) B		
(69-80) C		
(55-68) D		
(39-54) E		
(21-38) F		
(1-20) G		
Not energy efficient - higher running costs		
England & Wales	EU Directive 2002/91/EC	

Drake Circus 1 Charles St
Plymouth
PL1 1EA
07392818622
tyler.copp@coppestates.co.uk
www.coppestates.co.uk